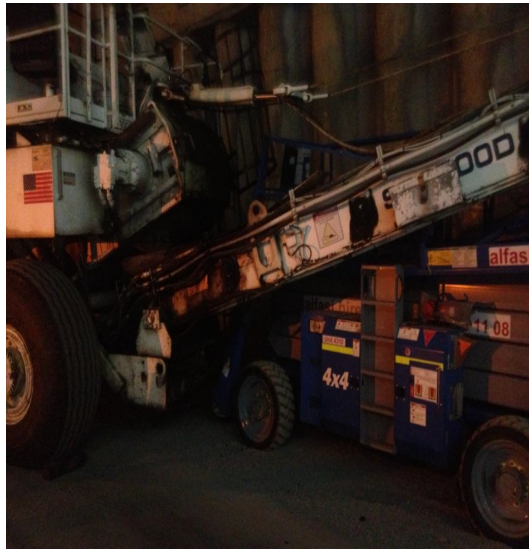


Uncontrolled Buggy Movement



Details

A shuttle buggy operator was travelling uphill in high gear, came to a stop, turned on the park brake, switched it to low gear, and then disengaged the park brake to move forward, the buggy rolled backwards. The operator then turned on the park brake and stood on the foot brake, the machine did not stop. The shuttle buggy impacted a scissor lift approx. 20 meters downhill.

Explanation

Operator failed to engage gear before removal of the park brake.

All team members failed to properly identify the risks associated with working on gradients in the zero harm pre-start meeting.

Safety Tips

Ensure all operators are familiar with the equipment's emergency stop location / s and function. A Test of the emergency stop functioning should be undertaken during the pre-start check

Ensure all workers on site are aware of and consider the hazards on a worksite (eg steep gradient)

Ensure all operators have a verification of competency on the use of the shuttle buggy

Remind all operators of the potential consequences of operating shuttle buggy on a gradient outside of low range

Conduct a risk assessment on uncontrolled shuttle buggy movements including consideration to mechanically locking machine into low range.

AAPA has prepared this Safety Alert from industry safety alerts and incident reports to provide assistance to members and the public in general. This Safety Alert is a reference point and should be combined with other information sources, relevant government legislation and other industry related materials in risk and hazard identification and in developing safety practices, policies and procedures. v4