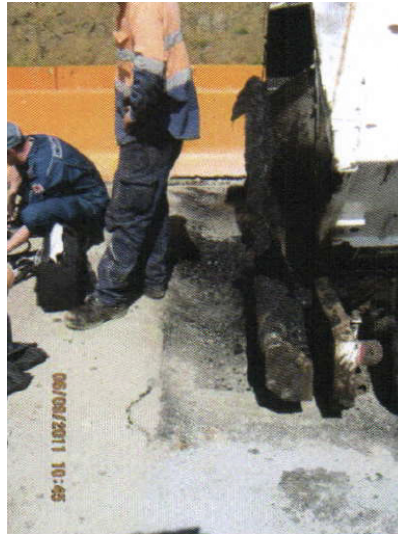


Foot wedged under paver hopper.



Details

Mid morning in September 2011 on the Warrago Highway, Toowomba Range, Queensland an asphalt crew member was pushing a build up of asphalt from the front of the paver into the paver hopper while the paver was creeping forwards. His right foot became wedged between the ramp at the end of the run and the front of the paver. The resulting injury was a chipped bone and soft tissue injuries to his foot.

Explanation

The paver was creeping forward at the time of the incident. There were no tippers on site which meant there was no Truck Controller present.

Safety Tips

The paver must be stopped (park brake engaged & conveyors turned off) and a Truck Controller or Spotter must be present before any ground personnel work in front of the paver hopper.